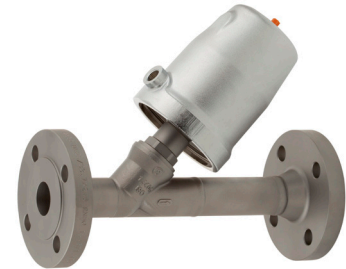


Angle Seat Valve 7031

1/2" up to 3"

Pneumatically operated angle seat valve for the control of neutral, slightly aggressive and highly aggressive media.

- Compact design
- Unaffected by lightly contaminated media
- For temperatures from 86°F up to +428°C
- Working pressure up to 580 psi
- Versatile actuator options



Technical Information

| | |
|---|---|
| Body material | Stainless steel CF8M |
| Nominal size | 1/2" up to 3" |
| Connections | flange acc. ASME B16.5: ANSI #150, ANSI #300 |
| Nominal pressure | ANSI #150 / ANSI #300 |
| Max. fluid temperature:* | |
| with metal bonnet | -22°F up to +338°F opt.-148°F up to +428°F |
| with plastic bonnet | -22°F up to +275°F |
| with diaphragm actuator | -22°F up to +392°F opt.-148 up to +428°F |
| Ambient temperature | -22°F up to +140°F |
| Viscosity of the fluid | maximum 600cSt, 80°E (600 mm ² /s) |
| Vacuum | maximum 0.0295 mercury (Hg) |
| Working pressure | See tables and diagrams, limitation for dangerous gases acc. Pressure equipment directive 2014/68/ EU (category I): PS (psi) x DN (inch) / 1.75 < 1000 |
| Working pressure for packing underneath | maximum 12 bar |
| Leakage acc. EN 12266-1 | leakage class A |
| Body dimension | L acc. DIN EN 558-92 (old: DIN 3202-F3) |
| *: Please consider further temperature versions and limits on Page 14 | |

Options and accessories

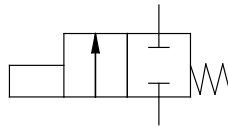
- Stroke limitation
- Manual emergency operation
- El. position indicator with inductive or mechanical limit switches
- Solenoid valves
- AS-I control head
- Oil- and greasefree version, PTFE-free version, siliconfree version
- Versions for oxygen or ozon applications
- FDA-compliant version
- Offshore-version
- Mounting bracket for inductive limit switches
- Version for higher pilot pressures
- Version for under water use
- ...

Angle Seat Valve 7031

Build up and function

Spring closes

The function „spring closes“ may be applied closing against or closing with the flow. In the configuration closing with the flow the valve should only be used for gaseous fluids. If used for liquids, water hammers may occur.



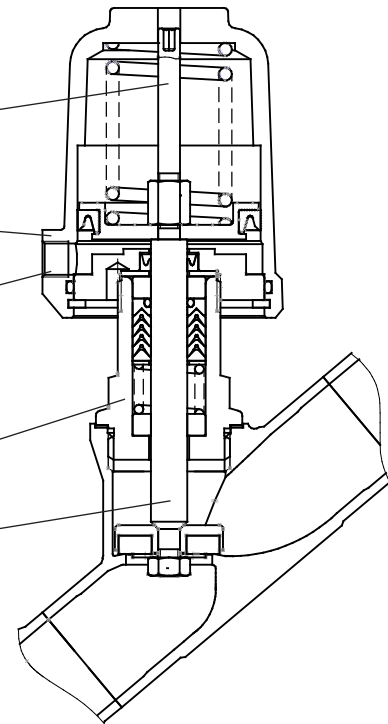
Removable position indicator

Bonnet can be rotated as required (compressed air connection)

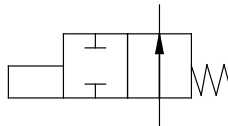
Direct pressure control (with a pilot valve if required) actuation by air, water, mineral oil and other media

Head Section

Piston rod stainless steel



Spring opens



Bonnet material chrome plated brass, plastic, stainless steel or Aluminium

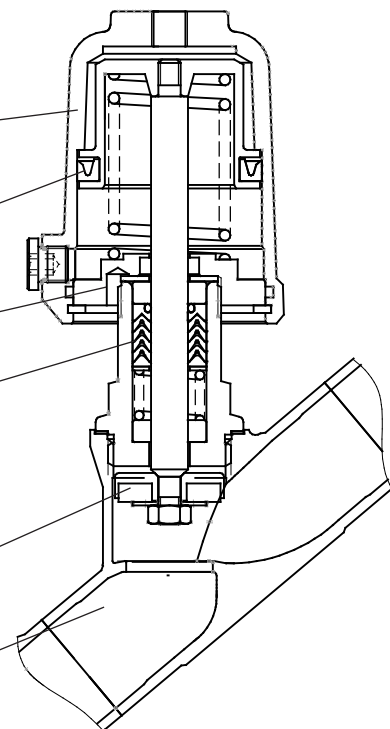
Exterior lip seal

Leak detector

PTFE packing, special version free or (packing underneath)

Seating seal in PTFE or other materials

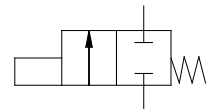
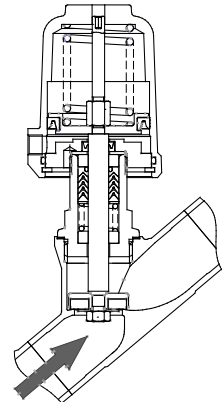
body with various connection types



Angle Seat Valve 7031

Pilot and operating pressures

Function „spring closes“, closing against flow



| Nominal size | Version | actuator | Springs | max. differential pressure | | | pilot pressure [psi] | |
|--------------|----------|-------------------|---------|----------------------------|--------|----------|-------------------------|----------|
| | | | | PTFE | PEEK 7 | PEEK 8 | | |
| Seating seal | | | | PTFE | PEEK 7 | PEEK 8 | | |
| 1/2" | Standard | 2" | 1 | 310 | - | 245 | 51 - 145 | |
| | | | 2 | 500 | 165 | 435 | 66 - 145 | |
| | | | 3 | 580 | 375 | 580 | 83 - 145 | |
| | | 3" | 1 | 580 | 580 | 580 | 51 - 145 | |
| 3/4" | Standard | 2" | 1 | 100 | - | 53 | 51 - 145 | |
| | | | 2 | 180 | - | 135 | 66 - 145 | |
| | | | 3 | 275 | 42 | 220 | 83 - 145 | |
| | | 3" | 1 | 580 | 360 | 550 | 51 - 145 | |
| | | | 2 | 580 | 555 | 580 | 64 - 145 | |
| | | | 3 | 580 | 580 | 580 | 82 - 145 | |
| 1" | Standard | 2" | 1 | 34 | - | - | 51 - 145 | |
| | | | 2 | 82 | - | 46 | 66 - 145 | |
| | | | 3 | 130 | - | 95 | 83 - 145 | |
| | | 3" | 1 | 315 | 140 | 280 | 51 - 145 | |
| | | | 2 | 435 | 250 | 395 | 64 - 145 | |
| | | | 3 | 565 | 390 | 525 | 82 - 145 | |
| | | 5" | 1 | 275 | 97 | 235 | 19 - 145 | |
| | | | 2 | 580 | 405 | 550 | 32 - 145 | |
| | | | 3 | 580 | 580 | 580 | 45 - 145 | |
| 1 1/4" | Standard | 2" | 1 | 14 | - | - | 51 - 145 | |
| | | | 2 | 44 | - | 15 | 66 - 145 | |
| | | | 3 | 73 | - | 44 | 83 - 145 | |
| | | 3" | 1 | 180 | 39 | 150 | 51 - 145 | |
| | | | 2 | 245 | 105 | 215 | 64 - 145 | |
| | | | 3 | 315 | 180 | 295 | 82 - 145 | |
| | | 5" | 1 | 150 | 15 | 125 | 19 - 145 | |
| | | | 2 | 340 | 200 | 310 | 32 - 145 | |
| | | | 3 | 485 | 345 | 455 | 45 - 145 | |
| | 4 | | 565 | 425 | 535 | 58 - 145 | | |
| | 10" | 8 | 580 | 580 | 580 | 40 - 87 | | |
| | | pressure balanced | 2" | 2 | 580 | - | 580 | 66 - 145 |
| | | | 3" | 1 | 580 | 580 | 580 | 51 - 145 |
| 2 | | | | 580 | 580 | 580 | 64 - 145 | |
| 1 1/2" | Standard | 2" | 2 | 27 | - | - | 66 - 145 | |
| | | | 3 | 47 | - | 23 | 83 - 145 | |
| | | | 1 | 110 | - | 89 | 51 - 145 | |
| | | 3" | 2 | 155 | 40 | 130 | 64 - 145 | |
| | | | 3 | 200 | 89 | 180 | 82 - 145 | |
| | | | 1 | 100 | - | 72 | 19 - 145 | |
| | | 5" | 2 | 220 | 105 | 200 | 32 - 145 | |
| | | | 3 | 315 | 200 | 295 | 45 - 145 | |
| | | | 4 | 360 | 235 | 340 | 58 - 145 | |
| | 8 | | 460 | 345 | 435 | 40 - 87 | | |
| | d16 | 10" | 12 | 580 | 525 | 580 | 54 - 87 | |
| | | | 2" | 3 | 580 | - | 580 | 83 - 145 |
| | | pressure balanced | 3" | 1 | 580 | - | 580 | 51 - 145 |
| 2 | | | | 580 | 580 | 580 | 64 - 145 | |

Standard spring configuration

d16: reinforced design with 16mm (0.63") piston rod

PEEK 7: Seating seal made of PEEK for use below 320°F

PEEK 8: Seating seal made of PEEK for use above 320°F

For soft seals such as EPDM, FKM, NBR or Vulkolan the same values as with PTFE are valid

Pilot and operating pressures

Function „spring closes“, closing against flow

| Nominal size | Version | actuator | Springs | max. differential pressure | | | pilot pressure [psi] |
|--------------|-------------------|----------|---------|----------------------------|--------|----------|----------------------|
| | | | | PTFE | PEEK 7 | PEEK 8 | |
| Seating seal | | | | | | | |
| 2" | Standard | 2" | 2 | 14 | - | - | 66 - 145 |
| | | | 3 | 27 | - | - | 83 - 145 |
| | | 3" | 1 | 59 | - | 40 | 51 - 145 |
| | | | 2 | 87 | - | 66 | 64 - 145 |
| | | | 3 | 110 | 17 | 94 | 82 - 145 |
| | | 5" | 1 | 55 | - | 36 | 19 - 145 |
| | 2 | | 125 | 34 | 110 | 32 - 145 | |
| | 3 | | 180 | 87 | 155 | 45 - 145 | |
| | d16 | 5" | 4 | 185 | 98 | 170 | 58 - 145 |
| | | | 8 | 280 | 185 | 260 | 40 - 87 |
| | | 10" | 12 | 395 | 300 | 375 | 54 - 87 |
| | pressure balanced | 2" | 2 | 455 | - | - | 66 - 145 |
| | | | 3 | 580 | - | - | 83 - 145 |
| | | 3" | 2 | 580 | 155 | 580 | 64 - 145 |
| | | | 3 | 580 | 580 | 580 | 82 - 145 |
| | | 5" | 2 | 580 | 580 | 580 | 32 - 145 |
| 3 | | | 580 | 580 | 580 | 32 - 145 | |
| 2 1/2" | Standard | 3" | 3 | 60 | - | 46 | 82 - 145 |
| | | | 1 | 27 | - | - | 19 - 145 |
| | | 5" | 2 | 69 | - | 56 | 32 - 145 |
| | | | 3 | 100 | 29 | 87 | 45 - 145 |
| | d16 | 5" | 3 | 100 | 29 | 87 | 45 - 145 |
| | | | 4 | 105 | 36 | 94 | 58 - 145 |
| | | 10" | 8 | 155 | 87 | 145 | 40 - 87 |
| | | | 12 | 215 | 145 | 200 | 54 - 87 |
| | pressure balanced | 2" | 2 | 300 | - | - | 66 - 145 |
| | | | 3 | 360 | - | 360 | 64 - 145 |
| | | 5" | 2 | 360 | - | 360 | 32 - 145 |
| | | | 3 | 360 | 360 | 360 | 45 - 145 |
| 3" | d16 | 5" | 3 | 68 | - | 56 | 46 - 145 |
| | | | 4 | 72 | - | 60 | 58 - 145 |
| | | 10" | 8 | 105 | 49 | 97 | 40 - 87 |
| | | | 12 | 150 | 92 | 140 | 54 - 87 |
| | pressure balanced | 3" | 2 | 360 | - | 260 | 67 - 145 |
| | | | 3 | 360 | - | 360 | 82 - 145 |
| | | 5" | 2 | 360 | - | 360 | 32 - 145 |
| | | | 3 | 360 | 88 | 360 | 46 - 145 |

 = Standard spring configuration

d16: reinforced design with 16mm (0.63") piston rod

PEEK 7: Seating seal made of PEEK for use below 320°F

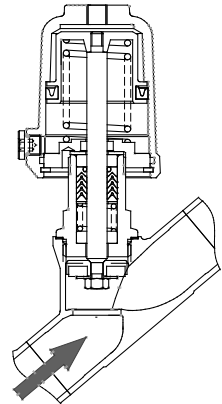
PEEK 8: Seating seal made of PEEK for use above 320°F

For soft seals such as EPDM, FKM, NBR or Vulkolan the same values as with PTFE are valid

Angle Seat Valve 7031

Pilot and operating pressures

Function „spring opens“, closing against flow



Seating seal PTFE, EPDM, FKM, NBR or Vulkolan

| Nominal size | Version | Actuator ϕ | Max. differential pressure [psi] at available pilot pressure [psi] | | | | | | | | | | | | |
|--------------|-----------|-----------------|--|-----|-----|-----|-----|-----|-----|-----|-----|-----|-----|-----|-----|
| | | | 20 | 30 | 40 | 50 | 60 | 70 | 80 | 90 | 100 | 110 | 120 | 130 | 140 |
| 1/2" | Standard | 2" | 0 | 0 | 47 | 185 | 325 | 465 | 580 | 580 | - | - | - | - | - |
| | | 3" | 310 | 580 | - | - | - | - | - | - | - | - | - | - | - |
| 3/4" | Standard | 2" | 0 | 0 | 0 | 54 | 120 | 190 | 260 | 330 | 400 | 470 | 540 | 580 | 580 |
| | | 3" | 115 | 300 | 480 | 580 | - | - | - | - | - | - | - | - | - |
| 1" | Standard | 2" | 0 | 0 | 0 | 15 | 56 | 97 | 135 | 180 | 220 | 260 | 300 | 345 | 385 |
| | | 3" | 53 | 160 | 270 | 375 | 485 | 580 | 580 | - | - | - | - | - | - |
| 1 1/4" | Standard | 2" | 0 | 0 | 0 | 2 | 28 | 54 | 79 | 105 | 130 | 155 | 180 | 205 | 230 |
| | | 3" | 21 | 89 | 155 | 220 | 290 | 355 | 425 | 490 | 560 | 580 | - | - | - |
| | | 5" | 205 | 370 | 535 | - | - | - | - | - | - | - | - | - | - |
| 1 1/2" | Standard | 2" | 0 | 0 | 0 | 0 | 16 | 33 | 51 | 69 | 87 | 105 | 120 | 140 | 155 |
| | | 3" | 8 | 55 | 100 | 145 | 195 | 240 | 290 | 335 | 380 | 430 | 475 | 525 | 570 |
| | | 5" | 135 | 250 | 365 | 480 | 580 | - | - | - | - | - | - | - | - |
| 2" | Standard | 2" | 0 | 0 | 0 | 0 | 6 | 18 | 30 | 41 | 53 | 64 | 76 | 87 | 99 |
| | | 3" | 0 | 27 | 58 | 88 | 115 | 145 | 175 | 205 | 235 | 270 | 300 | 330 | 360 |
| | | 5" | 80 | 155 | 230 | 300 | 375 | 450 | 525 | 580 | - | - | - | - | - |
| 2 1/2" | Standard | 3" | 0 | 12 | 29 | 46 | 63 | 81 | 98 | 115 | 130 | 145 | 165 | 180 | 200 |
| | | 5" | 42 | 84 | 125 | 165 | 210 | 250 | 295 | 335 | 360 | - | - | - | - |
| | d16 | 5" | 41 | 83 | 125 | 165 | 205 | 250 | 290 | 330 | 360 | - | - | - | - |
| 3" | Standard* | 3" | 0 | 6 | 18 | 30 | 42 | 54 | 66 | 78 | 90 | 100 | 110 | 125 | 135 |
| | | 5" | 27 | 57 | 86 | 115 | 145 | 170 | 200 | 230 | - | - | - | - | - |
| | d16 | 5" | 26 | 56 | 85 | 110 | 140 | 170 | 200 | 230 | 260 | 285 | 315 | 345 | 360 |

d16: reinforced design with 16mm (0.63") piston rod

Actuator 2": max. pilot pressure 15 psi above the required pilot pressure

Actuator 3": max. pilot pressure 12 psi above the required pilot pressure

Actuator 5" and 10": max. pilot pressure 7 psi above the required pilot pressure

Pilot and operating pressures

Function „spring opens“, closing against flow

Seating seal PEEK-8

| Nominal size | Version | Actuator | Max. differential pressure [psi] at available pilot pressure [psi] | | | | | | | | | | | | |
|--------------|----------|----------|--|-----|-----|-----|-----|-----|-----|-----|-----|-----|-----|-----|-----|
| | | | 20 | 30 | 40 | 50 | 60 | 70 | 80 | 90 | 100 | 110 | 120 | 130 | 140 |
| 1/2" | Standard | 2" | 0 | 0 | 0 | 120 | 260 | 400 | 540 | 580 | - | - | - | - | - |
| | | 3" | 245 | 580 | 580 | - | - | - | - | - | - | - | - | - | |
| 3/4" | Standard | 2" | 0 | 0 | 0 | 7 | 77 | 145 | 215 | 285 | 350 | 420 | 490 | 560 | 580 |
| | | 3" | 71 | 250 | 435 | 580 | - | - | - | - | - | - | - | - | |
| 1" | Standard | 2" | 0 | 0 | 0 | 0 | 20 | 61 | 100 | 140 | 185 | 225 | 265 | 305 | 350 |
| | | 3" | 17 | 125 | 230 | 340 | 450 | 555 | 580 | - | - | - | - | - | |
| 1 1/4" | Standard | 2" | 0 | 0 | 0 | 0 | 0 | 25 | 51 | 76 | 100 | 125 | 150 | 175 | 205 |
| | | 3" | 0 | 60 | 125 | 195 | 260 | 325 | 395 | 460 | 530 | 580 | - | - | - |
| | | 5" | 175 | 340 | 505 | 580 | - | - | - | - | - | - | - | - | |
| 1 1/2" | Standard | 3" | 0 | 31 | 78 | 125 | 170 | 215 | 265 | 310 | 360 | 405 | 450 | 500 | 545 |
| | | 5" | 110 | 225 | 345 | 460 | 575 | - | - | - | - | - | - | - | |
| 2" | Standard | 3" | 0 | 8 | 39 | 69 | 99 | 125 | 160 | 190 | 220 | 250 | 280 | 310 | 340 |
| | | 5" | 61 | 135 | 210 | 285 | 360 | 435 | 505 | 580 | - | - | - | - | |
| 2 1/2" | Standard | 3" | 0 | 0 | 15 | 32 | 49 | 66 | 83 | 100 | 115 | 135 | 150 | 165 | 185 |
| | | 5" | 28 | 70 | 110 | 150 | 195 | 235 | 280 | 320 | 360 | - | - | - | |
| | d16 | 10" | 0 | 81 | 165 | 255 | 340 | - | - | - | - | - | - | - | |
| 3" | d16 | 3" | 0 | 0 | 4 | 16 | 27 | 39 | 51 | 62 | 74 | 86 | 97 | 105 | 120 |
| | | 5" | 14 | 44 | 73 | 100 | 130 | 160 | 185 | 215 | 245 | 275 | 305 | 335 | 360 |
| | | 10" | 0 | 52 | 110 | 170 | 230 | 290 | 350 | - | - | - | - | - | |

Seating seal PEEK-7

| Nominal size | Version | Actuator | Max. differential pressure [psi] at available pilot pressure [psi] | | | | | | | | | | | | |
|--------------|----------|----------|--|-----|-----|-----|-----|-----|-----|-----|-----|-----|-----|-----|-----|
| | | | 20 | 30 | 40 | 50 | 60 | 70 | 80 | 90 | 100 | 110 | 120 | 130 | 140 |
| 1/2" | Standard | 2" | 0 | 0 | 47 | 185 | 325 | 465 | 580 | 580 | - | - | - | - | - |
| | | 3" | 310 | 580 | - | - | - | - | - | - | - | - | - | - | |
| 3/4" | Standard | 2" | 0 | 0 | 0 | 54 | 120 | 190 | 260 | 330 | 400 | 470 | 540 | 580 | 580 |
| | | 3" | 115 | 300 | 480 | 580 | - | - | - | - | - | - | - | - | |
| 1" | Standard | 3" | 53 | 160 | 270 | 375 | 485 | 580 | 580 | - | - | - | - | - | |
| | | 5" | 350 | 580 | - | - | - | - | - | - | - | - | - | - | |
| 1 1/4" | Standard | 3" | 21 | 89 | 155 | 220 | 290 | 355 | 425 | 490 | 560 | 580 | - | - | - |
| | | 5" | 205 | 370 | 535 | - | - | - | - | - | - | - | - | - | |
| 1 1/2" | Standard | 3" | 8 | 55 | 100 | 145 | 195 | 240 | 290 | 335 | 380 | 430 | 475 | 525 | 570 |
| | | 5" | 135 | 250 | 365 | 480 | 580 | - | - | - | - | - | - | - | |
| 2" | Standard | 3" | 0 | 27 | 58 | 88 | 115 | 145 | 175 | 205 | 235 | 270 | 300 | 330 | 360 |
| | | 5" | 80 | 155 | 230 | 300 | 375 | 450 | 525 | 580 | - | - | - | - | |
| | | 10" | 22 | 175 | 325 | 480 | - | - | - | - | - | - | - | - | |
| 2 1/2" | Standard | 5" | 42 | 84 | 125 | 165 | 210 | 250 | 295 | 335 | 360 | - | - | - | - |
| | d16 | 10" | 9 | 96 | 180 | 265 | 355 | - | - | - | - | - | - | - | |
| 3" | d16 | 5" | 26 | 56 | 85 | 110 | 140 | 170 | 200 | 230 | 260 | 285 | 315 | 345 | 360 |
| | | 10" | 4 | 64 | 125 | 185 | 245 | 305 | 360 | - | - | - | - | - | |

d16: reinforced design with 16mm (0.63") piston rod

PEEK 7: Seating seal made of PEEK for use below 320°F

PEEK 8: Seating seal made of PEEK for use above 320°F

Actuator 2": max. pilot pressure 15 psi above the required pilot pressure

Actuator 3": max. pilot pressure 12 psi above the required pilot pressure

Actuator 5" and 10": max. pilot pressure 7 psi above the required pilot pressure

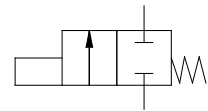
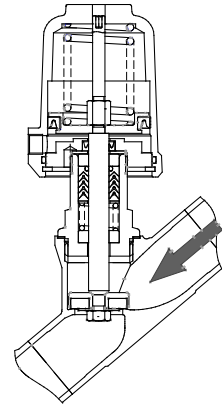
Angle Seat Valve 7031



Pilot and operating pressures

Function „spring closes“, closing with flow

- Angled seat valve closing with the flow, spring closes
- Use preferably for gaseous fluids
- With liquids waterhammers are possible



Seating seal PTFE, EPDM, FKM, NBR or Vulkolan

| Nominal Size | Version | Actuator | Springs | Max. differential pressure [psi] at available pilot pressure [psi] | | | | | | | | | | | | | |
|--------------|----------|----------|----------|--|-----|-----|-----|-----|-----|-----|-----|-----|-----|-----|-----|-----|-----|
| | | | | 20 | 30 | 40 | 50 | 60 | 70 | 80 | 90 | 100 | 110 | 120 | 130 | 140 | |
| 1/2" | Standard | 2" | Standard | 0 | 0 | 195 | 530 | 580 | 580 | 580 | 580 | 580 | 580 | 580 | 580 | 580 | 580 |
| 3/4" | Standard | 2" | Standard | 0 | 0 | 92 | 185 | 285 | 380 | 480 | 580 | 580 | 580 | 580 | 580 | 580 | 580 |
| | | 3" | Standard | 145 | 400 | 580 | 580 | 580 | 580 | 580 | 580 | 580 | 580 | 580 | 580 | 580 | 580 |
| 1" | Standard | 2" | Standard | 0 | 8 | 58 | 105 | 155 | 205 | 255 | 305 | 355 | 405 | 455 | 475 | 475 | |
| | | 3" | Standard | 80 | 210 | 340 | 470 | 475 | 475 | 475 | 475 | 475 | 475 | 475 | 475 | 475 | 475 |
| 1 1/4" | Standard | 2" | Standard | 0 | 5 | 34 | 62 | 91 | 120 | 145 | 175 | 205 | 230 | 260 | 275 | 275 | |
| | | 3" | Standard | 49 | 120 | 200 | 275 | 350 | 425 | 500 | 505 | 505 | 505 | 505 | 505 | 505 | 505 |
| | | 5" | Standard | 250 | 435 | 505 | 505 | 505 | 505 | 505 | 505 | 505 | 505 | 505 | 505 | 505 | 505 |
| 1 1/2" | Standard | 2" | Standard | 0 | 0 | 14 | 33 | 53 | 72 | 91 | 110 | 130 | 150 | 165 | 185 | 185 | |
| | | 3" | Standard | 0 | 43 | 94 | 140 | 195 | 245 | 295 | 330 | 330 | 330 | 330 | 330 | 330 | |
| | | 5" | Standard | 70 | 195 | 320 | 330 | 330 | 330 | 330 | 330 | 330 | 330 | 330 | 330 | 330 | |
| | d16 | 5" | Standard | 67 | 190 | 315 | 435 | 560 | 580 | 580 | 580 | 580 | 580 | 580 | 580 | 580 | |
| 2" | Standard | 2" | Standard | 0 | 0 | 8 | 20 | 32 | 44 | 56 | 69 | 81 | 93 | 105 | 115 | 115 | |
| | | 3" | Standard | 1 | 33 | 65 | 97 | 125 | 160 | 190 | 215 | 215 | 215 | 215 | 215 | 215 | |
| | | 5" | Standard | 50 | 125 | 205 | 215 | 215 | 215 | 215 | 215 | 215 | 215 | 215 | 215 | 215 | |
| | d16 | 5" | Standard | 49 | 125 | 200 | 280 | 355 | 435 | 510 | 550 | 550 | 550 | 550 | 550 | 550 | |
| 2 1/2" | Standard | 3" | Standard | 0 | 18 | 35 | 53 | 71 | 88 | 105 | 120 | 140 | 155 | 170 | 170 | 170 | |
| | | 5" | Standard | 27 | 71 | 110 | 155 | 170 | 170 | 170 | 170 | 170 | 170 | 170 | 170 | 170 | |
| | d16 | 5" | Standard | 26 | 69 | 110 | 155 | 195 | 240 | 280 | 290 | 290 | 290 | 290 | 290 | 290 | |
| 3" | Standard | 3" | Standard | 0 | 12 | 24 | 36 | 49 | 61 | 73 | 85 | 97 | 110 | 120 | 130 | 130 | |
| | | 5" | Standard | 19 | 49 | 79 | 105 | 130 | 130 | 130 | 130 | 130 | 130 | 130 | 130 | 130 | |
| | d16 | 3" | Standard | 0 | 10 | 22 | 34 | 46 | 58 | 70 | 81 | 93 | 105 | 115 | 125 | 140 | |
| | | 5" | Standard | 18 | 48 | 77 | 105 | 135 | 165 | 185 | 185 | 185 | 185 | 185 | 185 | 185 | |
| | | 10" | Standard | 15 | 77 | 135 | 185 | 185 | 185 | 185 | 185 | 185 | 185 | 185 | 185 | 185 | |

d16: reinforced design with 16mm (0.63") piston rod

Pilot and operating pressures

Function „spring closes“, closing with flow

Seating seal PEEK-8

| Nominal Size | Version | Actuator | Springs | Max. differential pressure [psi] at available pilot pressure [psi] | | | | | | | | | | | | |
|--------------|----------|----------|---------|--|-----|-----|-----|-----|-----|-----|-----|-----|-----|-----|-----|-----|
| | | | | 20 | 30 | 40 | 50 | 60 | 70 | 80 | 90 | 100 | 110 | 120 | 130 | 140 |
| 1/2" | Standard | 2" | 2 | 0 | 0 | 0 | 0 | 125 | 460 | 580 | 580 | 580 | 580 | 580 | 580 | 580 |
| 3/4" | Standard | 2" | 2 | 0 | 0 | 0 | 9 | 105 | 200 | 300 | 395 | 495 | 580 | 580 | 580 | 580 |
| | | 3" | 1 | 0 | 0 | 0 | 190 | 445 | 580 | 580 | 580 | 580 | 580 | 580 | 580 | 580 |
| | | 0" | 1 | 260 | 580 | 580 | 580 | 580 | 580 | 580 | 580 | 580 | 580 | 580 | 580 | 580 |
| 1" | Standard | 2" | 2 | 0 | 0 | 0 | 27 | 77 | 125 | 175 | 225 | 275 | 325 | 375 | 425 | 475 |
| | | 3" | 1 | 0 | 0 | 0 | 125 | 255 | 385 | 475 | 475 | 475 | 475 | 475 | 475 | 475 |
| | | 5" | 1 | 260 | 580 | 580 | 580 | 580 | 580 | 580 | 580 | 580 | 580 | 580 | 580 | 580 |
| 1 1/4" | Standard | 2" | 2 | 0 | 0 | 0 | 17 | 45 | 74 | 100 | 130 | 160 | 185 | 215 | 245 | 275 |
| | | 3" | 1 | 0 | 0 | 12 | 88 | 160 | 235 | 310 | 385 | 460 | 505 | 505 | 505 | 505 |
| | | 5" | 1 | 95 | 280 | 465 | 505 | 505 | 505 | 505 | 505 | 505 | 505 | 505 | 505 | 505 |
| 1 1/2" | Standard | 3" | 1 | 0 | 0 | 17 | 68 | 115 | 170 | 220 | 270 | 320 | 330 | 330 | 330 | 330 |
| | | 5" | 2 | 0 | 59 | 185 | 310 | 330 | 330 | 330 | 330 | 330 | 330 | 330 | 330 | 330 |
| | d16 | 5" | 2 | 0 | 56 | 180 | 300 | 425 | 550 | 580 | 580 | 580 | 580 | 580 | 580 | 580 |
| 2" | Standard | 3" | 2 | 0 | 0 | 0 | 25 | 57 | 89 | 120 | 150 | 180 | 215 | 215 | 215 | 215 |
| | | 5" | 2 | 0 | 50 | 125 | 205 | 215 | 215 | 215 | 215 | 215 | 215 | 215 | 215 | |
| | d16 | 5" | 2 | 0 | 47 | 125 | 200 | 280 | 355 | 435 | 510 | 550 | 550 | 550 | 550 | 550 |
| | | 10" | 6 | 41 | 200 | 360 | 520 | 550 | 550 | 550 | 550 | 550 | 550 | 550 | 550 | |
| 2 1/2" | Standard | 5" | 2 | 0 | 27 | 70 | 110 | 155 | 170 | 170 | 170 | 170 | 170 | 170 | 170 | 170 |
| | | d16 | 5" | 2 | 0 | 25 | 68 | 110 | 150 | 195 | 240 | 280 | 290 | 290 | 290 | 290 |
| | d16 | 10" | 6 | 23 | 110 | 200 | 290 | 290 | 290 | 290 | 290 | 290 | 290 | 290 | 290 | 290 |
| 3" | d16 | 5" | 2 | 0 | 17 | 47 | 77 | 105 | 135 | 165 | 185 | 185 | 185 | 185 | 185 | 185 |
| | | 10" | 6 | 15 | 77 | 135 | 185 | 185 | 185 | 185 | 185 | 185 | 185 | 185 | 185 | 185 |

Seating seal PEEK-7

| Nominal Size | Version | Actuator | Springs | Max. differential pressure [psi] at available pilot pressure [psi] | | | | | | | | | | | | |
|--------------|----------|----------|---------|--|-----|-----|-----|-----|-----|-----|-----|-----|-----|-----|-----|-----|
| | | | | 20 | 30 | 40 | 50 | 60 | 70 | 80 | 90 | 100 | 110 | 120 | 130 | 140 |
| 1/2" | Standard | 2" | 2 | 0 | 0 | 0 | 0 | 125 | 460 | 580 | 580 | 580 | 580 | 580 | 580 | 580 |
| 3/4" | Standard | 3" | 1 | 0 | 0 | 0 | 190 | 445 | 580 | 580 | 580 | 580 | 580 | 580 | 580 | 580 |
| | | | 1 | 260 | 580 | 580 | 580 | 580 | 580 | 580 | 580 | 580 | 580 | 580 | 580 | |
| 1" | Standard | 3" | 1 | 0 | 0 | 0 | 125 | 255 | 385 | 475 | 475 | 475 | 475 | 475 | 475 | 475 |
| | | | 1 | 150 | 470 | 475 | 475 | 475 | 475 | 475 | 475 | 475 | 475 | 475 | 475 | |
| 1 1/4" | Standard | 3" | 2 | 0 | 0 | 0 | 12 | 88 | 160 | 235 | 310 | 385 | 460 | 505 | 505 | 505 |
| | | 5" | 1 | 95 | 280 | 465 | 505 | 505 | 505 | 505 | 505 | 505 | 505 | 505 | 505 | 505 |
| 1 1/2" | Standard | 3" | 2 | 0 | 0 | 0 | 20 | 70 | 120 | 170 | 220 | 270 | 325 | 330 | 330 | 330 |
| | | 5" | 2 | 0 | 59 | 185 | 310 | 330 | 330 | 330 | 330 | 330 | 330 | 330 | 330 | 330 |
| | d16 | 5" | 2 | 0 | 56 | 180 | 300 | 425 | 550 | 580 | 580 | 580 | 580 | 580 | 580 | 580 |
| 2" | Standard | 5" | 2 | 0 | 50 | 125 | 205 | 215 | 215 | 215 | 215 | 215 | 215 | 215 | 215 | 215 |
| | | 5" | 2 | 0 | 47 | 125 | 200 | 280 | 355 | 435 | 510 | 550 | 550 | 550 | 550 | 550 |
| | d16 | 10" | 6 | 41 | 200 | 360 | 520 | 550 | 550 | 550 | 550 | 550 | 550 | 550 | 550 | |
| 2 1/2" | Standard | 5" | 3 | 0 | 0 | 39 | 82 | 125 | 165 | 170 | 170 | 170 | 170 | 170 | 170 | 170 |
| | | 5" | 3 | 0 | 0 | 37 | 80 | 120 | 165 | 205 | 250 | 290 | 290 | 290 | 290 | 290 |
| | d16 | 10" | 6 | 23 | 110 | 200 | 290 | 290 | 290 | 290 | 290 | 290 | 290 | 290 | 290 | 290 |
| 3" | d16 | 5" | 2 | 0 | 17 | 47 | 77 | 105 | 135 | 165 | 185 | 185 | 185 | 185 | 185 | 185 |
| | | 10" | 6 | 15 | 77 | 135 | 185 | 185 | 185 | 185 | 185 | 185 | 185 | 185 | 185 | 185 |

d16: reinforced design with 16mm (0.63") piston rod

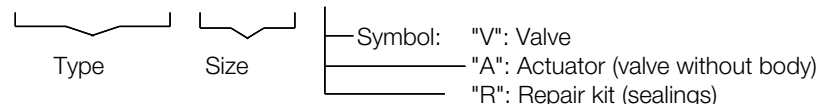
PEEK 7: Seating seal made of PEEK for use below 320°F

PEEK 8: Seating seal made of PEEK for use above 320°F

Ordering Number System

| | | | | | | | | | | | | | | | | | | | |
|---|---|---|---|---|--|--|--|---|--|--|--|--|--|--|--|--|--|--|---|
| 7 | 0 | 1 | 0 | / | | | | V | | | | | | | | | | | S |
|---|---|---|---|---|--|--|--|---|--|--|--|--|--|--|--|--|--|--|---|

1 - 6 : Please quote all 6 sections.
7 - 12: Quote only if required.



| 1. | Type de construction | 2. | Raccordement | 3. | Corps | 4. | Joint de siège | 5. | Fonction du pilotage | 6. | Tête de commande |
|----|---------------------------|----|---|----|-------------------------------------|-----|--|-----|--|-----|---|
| 2 | siège incliné avec brides | 9 | brides selon DIN EN 1092-1 PN40; longueur utile selon DIN 3202 F3 | 2 | acier inox 1.4408 | 0 | PTFE (Téflon) | 0 | NF (normalement fermée), ferm. avec le sens du fluide | 0 | piston 50 mm |
| | | C | brides siège incliné selon ANSI 150 | | | 1 | FKM (Viton) | 1 | NO (normalement ouverte), ferm. contre le sens du fluide | 1 | piston 80 mm |
| | | F | brides siège incliné selon ANSI 300 | | | 2 | EPDM | 1 | NF (normalement fermée), ferm. contre le sens du fluide | 2 | piston 125 mm |
| | | | | | | 3 | NBR (Perbunan) | 2 | NF (normalement fermée), ferm. contre le sens du fluide | C | membrane 250 mm |
| | | | | | | 5 | PTFE avec fibre de verre (25%) | 2 | NF (normalement fermée), ferm. contre le sens du fluide | K | actionneur synthétique 50 mm |
| | | | | | | 7 | PEEK | 3 | double effet | M | actionneur synthétique 80 mm |
| | | | | | | 8 | PEEK pour applications au dessus de 160°C | 5 | NF détendu (contre le sens du fluide) | | |
| | | | | | | | | 7 | NO détendu (fermant contre le sens du fluide) | | |
| 7. | Ressorts | 8. | Pièce intermédiaire | 9. | Position de la garniture | 10. | Température | 11. | Accessoires | 12. | Autres Versions |
| - | standard | - | standard | - | Standard | - | standard | - | sans accessoires | S | Exécutions spéciales sur demande |
| 1 | 1 ressort | K | version renforcée | 2 | sans espace mort (Garniture en bas) | H | exécution haute température | 1 | 1 micro contact auxiliaire | M | Indicateur de position avec presse étoupe |
| 2 | 2 ressorts | | | | | W | exécution basse température, température ambiante jusqu'à -40 °C, température de fluide -50 °C | 2 | 2 micro contacts auxiliaire | N | Indicateur de position avec connection enfichable |
| 3 | 3 ressorts | | | | | | | 3 | commande manuelle en cas d'urgence | | |
| T | 6 ressorts (D 250mm) | | | | | | | 4 | commande manuelle auxiliaire | | |
| W | 8 ressorts (D 250mm) | | | | | | | 5 | limiteur de course | | |
| Y | 12 ressorts (D 250mm) | | | | | | | 6 | vanne de pil. DN 2 230 V AC | | |
| | | | | | | | | 7 | vanne de pil. DN 2 24 DC | | |
| | | | | | | | | K | 1 contact auxiliaire compact | | |
| | | | | | | | | M | 2 contacts auxiliaires inductifs 10-36 V DC PNP | | |
| | | | | | | | | P | 2 Grenzsinalgeber induktiv 10-36V DC | | |
| | | | | | | | | T | auxiliaire inductif (compact) 10-36 V DC | | |

Ordering example:

7010/050V2C20212- - -5

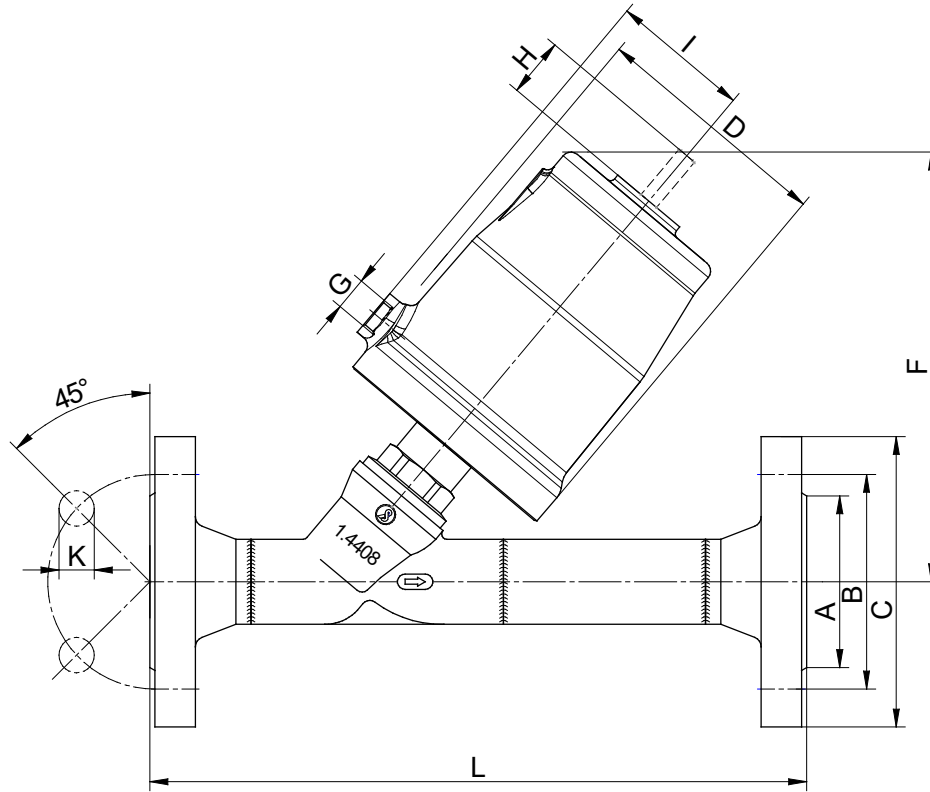
Nominal size 2", angle seat flange valve, flange acc. ANSI #150 stainless steel body, PTFE seatmaterial, N.C., actuator size 3", two springs, stroke limitation.

Angle Seat Valve 7031



standard design

Dimensions and Weights



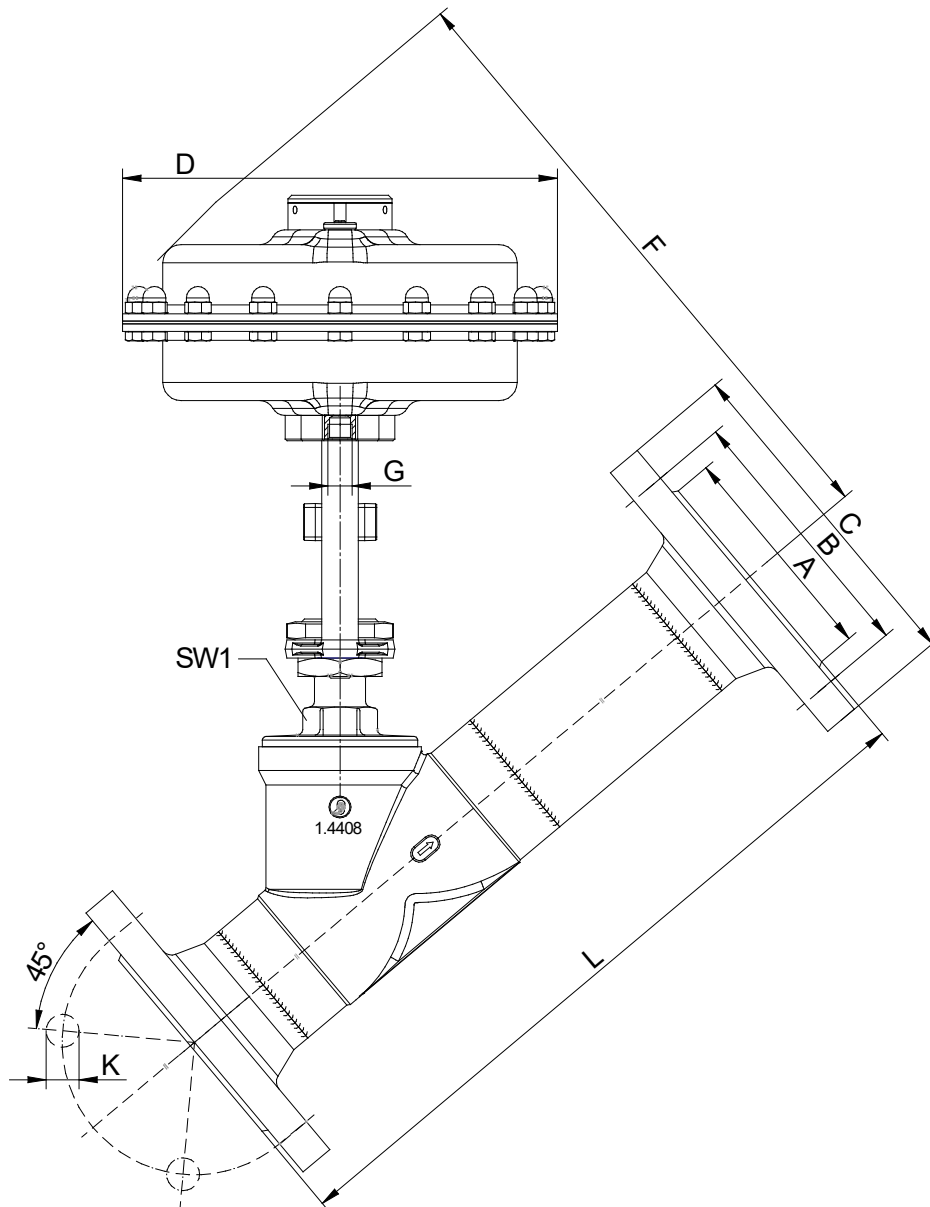
Normal closed

| DN | piston Ø | A | | B | | C | | D | F | G | H | | K | | L* | M | N number of bores | Cvs- value | Weight (lbs) |
|--------|-------------|------------------------|--------------|------|--------------|------|--------------|------|------|------|---------------|------|------|--------------|-------|------|-------------------------|---------------|-----------------|
| | | PN40 (DN65 PN16) | ANSI #150 | PN40 | ANSI #150 | PN40 | ANSI #150 | | | | (stro- ke) | I | PN40 | ANSI #150 | | | | | |
| 1/2" | 2" | 1.77 | 1.37 | 2.56 | 2.37 | 3.74 | 3.54 | 2.44 | 4.92 | G1/8 | 0.28 | 1.36 | 0.55 | 0.62 | 9.06 | 2.56 | 4 | 4.1 | 6 |
| 3/4" | 2" | 2.28 | 1.69 | 2.95 | 2.75 | 4.13 | 3.94 | 2.44 | 4.92 | G1/8 | 0.47 | 1.36 | 0.55 | 0.62 | 10.24 | 2.95 | 4 | 10.4 | 7.5 |
| 1" | 2" | 2.68 | 2 | 3.35 | 3.13 | 4.53 | 4.33 | 2.44 | 5.12 | G1/8 | 0.63 | 1.36 | 0.55 | 0.62 | 10.24 | 3.35 | 4 | 17.4 | 9 |
| | 3" | 2.68 | 2 | 3.35 | 3.13 | 4.53 | 4.33 | 3.86 | 6.69 | G1/4 | 0.63 | 2.17 | 0.55 | 0.62 | 10.24 | 3.35 | 4 | 19.7 | 12.6 |
| 1 1/4" | 2" | 3.07 | 2.5 | 3.94 | 3.5 | 5.51 | 4.53 | 2.44 | 5.71 | G1/8 | 0.63 | 1.36 | 0.71 | 0.62 | 11.81 | 3.94 | 4 | 24.4 | 12.6 |
| | 3" | 3.07 | 2.5 | 3.94 | 3.5 | 5.51 | 4.53 | 3.86 | 7.28 | G1/4 | 0.79 | 2.17 | 0.71 | 0.62 | 11.81 | 3.94 | 4 | 27.8 | 15.9 |
| | 5" | 3.07 | 2.5 | 3.94 | 3.5 | 5.51 | 4.53 | 5.75 | 8.46 | G1/4 | 0.79 | 3.15 | 0.71 | 0.62 | 11.81 | 3.94 | 4 | 27.8 | 20.7 |
| 1 1/2" | 2" | 3.46 | 2.87 | 4.33 | 3.87 | 5.91 | 4.92 | 2.44 | 5.91 | G1/8 | 0.63 | 1.36 | 0.71 | 0.62 | 11.81 | 4.33 | 4 | 34.8 | 14.1 |
| | 3" | 3.46 | 2.87 | 4.33 | 3.87 | 5.91 | 4.92 | 3.86 | 7.48 | G1/4 | 0.91 | 2.17 | 0.71 | 0.62 | 11.81 | 4.33 | 4 | 42.9 | 17.4 |
| | 5" | 3.46 | 2.87 | 4.33 | 3.87 | 5.91 | 4.92 | 5.75 | 8.66 | G1/4 | 0.91 | 3.15 | 0.71 | 0.62 | 11.81 | 4.33 | 4 | 42.9 | 22 |
| 2" | 2" | 4.02 | 3.63 | 4.92 | 4.75 | 6.5 | 5.91 | 2.44 | 6.3 | G1/8 | 0.63 | 1.36 | 0.71 | 0.75 | 13.78 | 4.92 | 4 | 46.4 | 19 |
| | 3" | 4.02 | 3.63 | 4.92 | 4.75 | 6.5 | 5.91 | 3.86 | 7.68 | G1/4 | 1.14 | 2.17 | 0.71 | 0.75 | 13.78 | 4.92 | 4 | 67.3 | 22.3 |
| | 5" | 4.02 | 3.63 | 4.92 | 4.75 | 6.5 | 5.91 | 5.75 | 8.86 | G1/4 | 1.14 | 3.15 | 0.71 | 0.75 | 13.78 | 4.92 | 4 | 67.3 | 27.6 |
| 2 1/2" | 3" | 4.8 | 4.13 | 5.71 | 5.5 | 7.28 | 7.09 | 3.86 | 8.46 | G1/4 | 1.14 | 2.17 | 0.71 | 0.75 | 15.75 | 4.92 | 8/4 | 92.8 | 30.6 |
| | 5" | 4.8 | 4.13 | 5.71 | 5.5 | 7.28 | 7.09 | 5.75 | 9.65 | G1/4 | 1.14 | 3.15 | 0.71 | 0.75 | 15.75 | 4.92 | 8/4 | 92.8 | 32.2 |
| 3" | 5" | 5.43 | 5 | 6.3 | 6 | 7.87 | 7.48 | 5.75 | 9.92 | G1/4 | 1.14 | 3.15 | 0.71 | 0.75 | 17.72 | 4.92 | 8/4 | 129.92 | 36.7 |

Angle Seat Valve 7031

reinforced design

Dimensions and Weights



PN40

| Size | Piston Ø | A | B | C | D | K | number of borings | L | G | F | SW1 | F | | SW1 | Cvs- value | Weight (kg) |
|------|-------------|-----|-----|-----|-----|----|----------------------|-----|--------|-----|-----|----------|----------|-----|---------------|----------------|
| | | | | | | | | | | | | pressure | balanced | | | |
| 50 | 250 | 102 | 125 | 165 | 146 | 18 | 4 | 350 | NPT1/4 | 337 | 32 | 342 | 52 | 58 | 20,3 | |
| 65 | 250 | 122 | 145 | 185 | 146 | 18 | 8 | 400 | NPT1/4 | 345 | 41 | 359 | 36 | 80 | 23 | |
| 80 | 250 | 138 | 160 | 200 | 146 | 18 | 8 | 450 | NPT1/4 | 450 | 41 | 416 | 46 | 112 | 23 | |

ANSI150

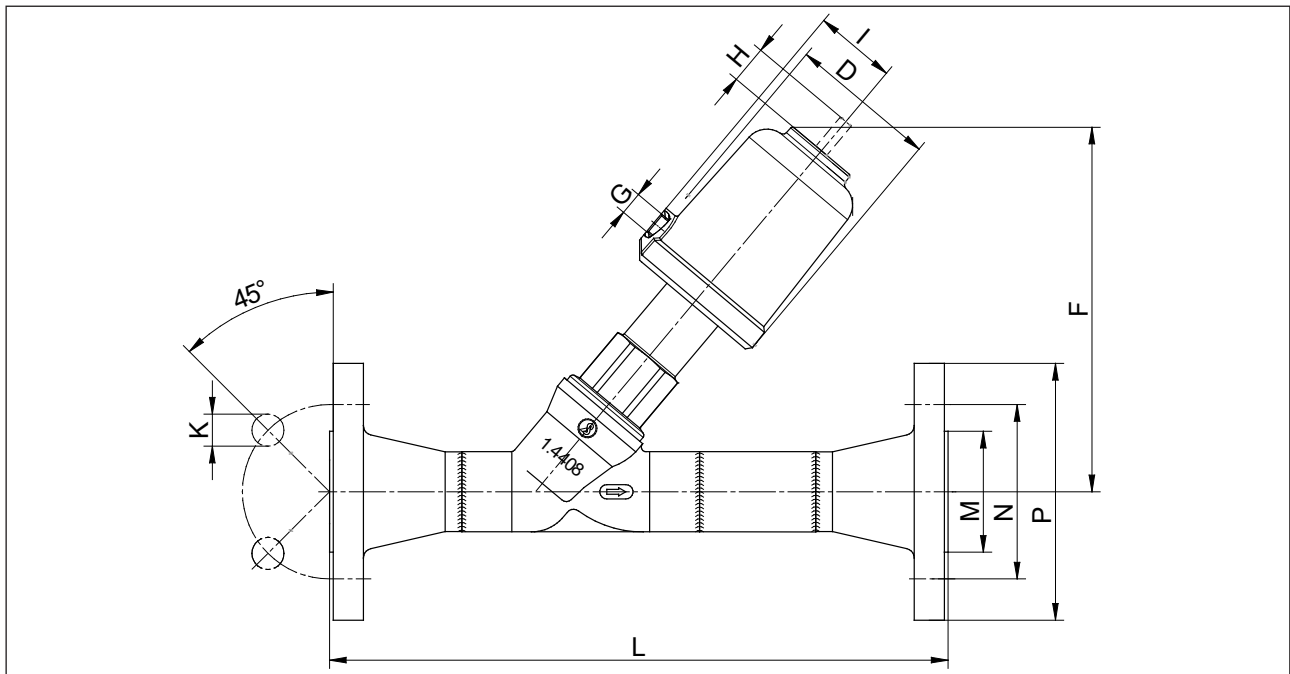
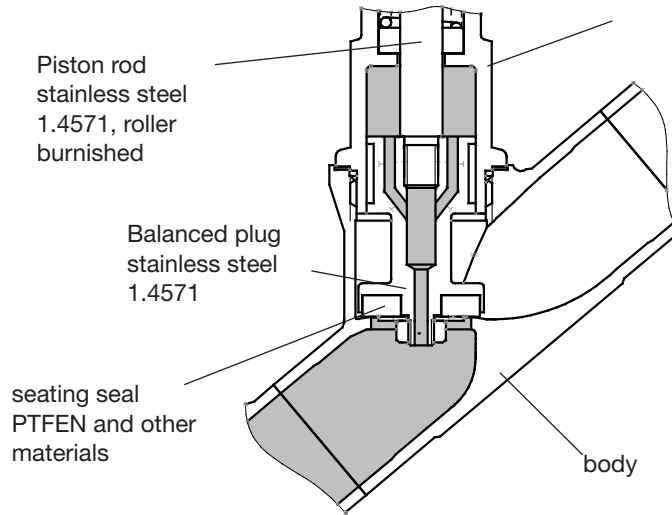
| Size | Piston Ø | A | B | C | D | K | number of borings | L | G | F | SW1 | F | | SW1 | Cvs-Werte | Weight (kg) |
|------|-------------|-----|-----|-----|-----|----|----------------------|-----|--------|-----|-----|----------|----------|-----|-----------|----------------|
| | | | | | | | | | | | | pressure | balanced | | | |
| 50 | 250 | 92 | 121 | 152 | 146 | 19 | 4 | 350 | NPT1/4 | 337 | 32 | 342 | 52 | 58 | 20,3 | |
| 65 | 250 | 107 | 140 | 178 | 146 | 19 | 4 | 400 | NPT1/4 | 345 | 41 | 359 | 36 | 80 | 23 | |
| 80 | 250 | 127 | 152 | 191 | 146 | 19 | 4 | 450 | NPT1/4 | 450 | 41 | 416 | 46 | 112 | 23 | |

Angle Seat Valve 7031

pressure balanced version



Build up, dimensions and weight

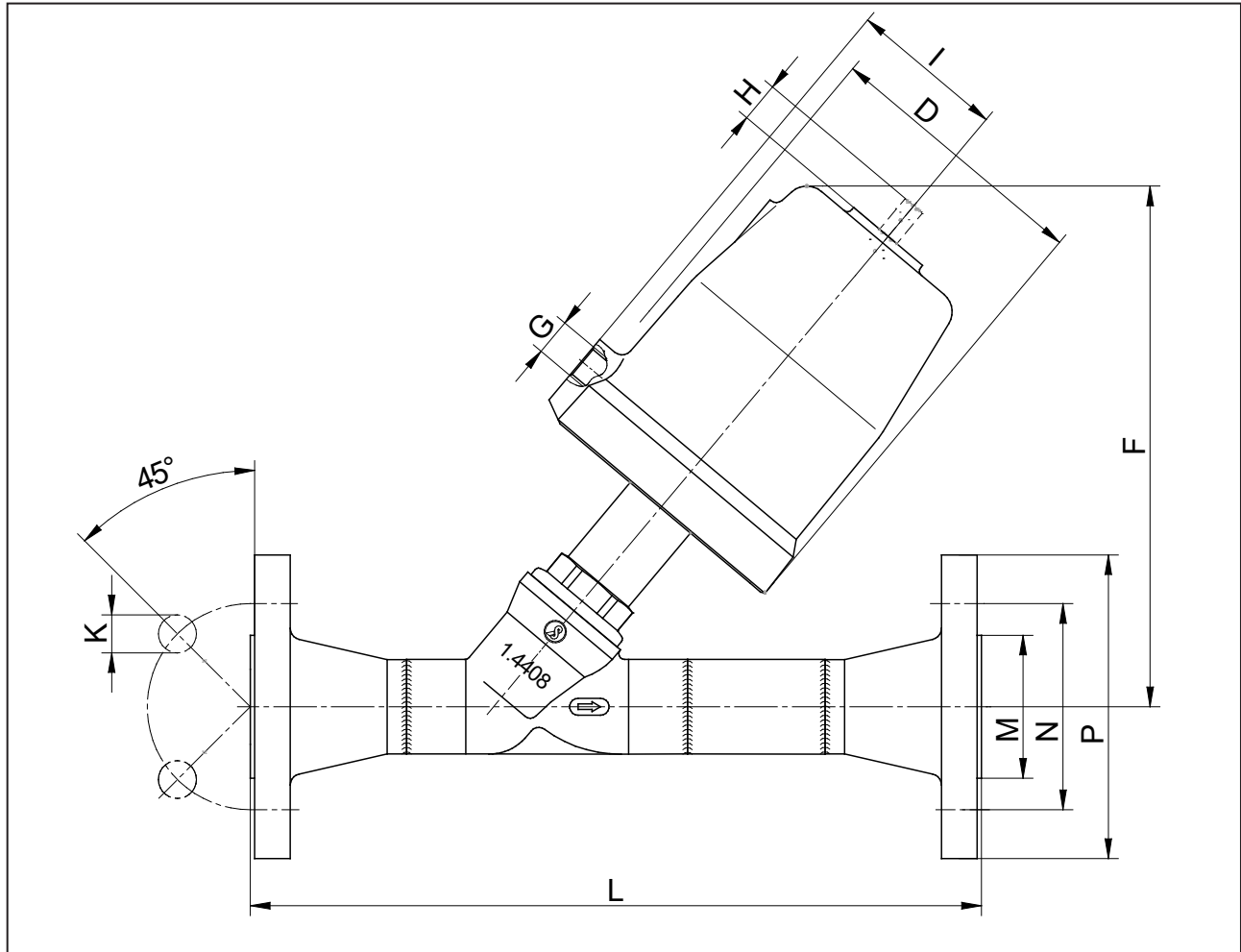


| DN | Piston Ø | D | PN40 | | | | ANIS150 | | | | L | number of bo-rings | I | F | G | H (stroke) |
|--------|----------|------|------|------|------|------|---------|------|------|------|-------|--------------------|------|-------|---------|------------|
| | | | M | N | P | K | M | N | P | K | | | | | | |
| 1 1/4" | 2" | 2.44 | 3.46 | 3.94 | 5.91 | 0.71 | 2.5 | 3.5 | 4.62 | 0.62 | 11.81 | 4 | 1.36 | 6.5 | NPT1/8" | 0.63 |
| | 3" | 3.78 | 3.46 | 3.94 | 5.91 | 0.71 | 2.5 | 3.5 | 4.62 | 0.62 | 11.81 | 4 | 2.17 | 8.07 | NPT1/4" | 0.63 |
| 1 1/2" | 2" | 2.44 | 3.46 | 4.33 | 5.91 | 0.71 | 2.88 | 3.88 | 5 | 0.62 | 11.81 | 4 | 1.36 | 6.89 | NPT1/8" | 0.63 |
| | 3" | 3.78 | 3.46 | 4.33 | 5.91 | 0.71 | 2.88 | 3.88 | 5 | 0.62 | 11.81 | 4 | 2.17 | 8.27 | NPT1/4" | 0.83 |
| 2" | 2" | 2.44 | 4.02 | 4.92 | 6.5 | 0.71 | 3.62 | 4.75 | 6 | 0.75 | 13.78 | 4 | 1.36 | 7.09 | NPT1/8" | 0.63 |
| | 3" | 3.78 | 4.02 | 4.92 | 6.5 | 0.71 | 3.62 | 4.75 | 6 | 0.75 | 13.78 | 4 | 2.17 | 8.66 | NPT1/4" | 0.87 |
| | 5" | 5.75 | 4.02 | 4.92 | 6.5 | 0.71 | 3.62 | 4.75 | 6 | 0.75 | 13.78 | 4 | 3.15 | 9.65 | NPT1/4" | 0.87 |
| 2 1/2" | 2" | 2.44 | 4.8 | 5.71 | 7.28 | 0.71 | 4.23 | 5.49 | 7 | 0.75 | 15.75 | 8/4 | 1.36 | 7.87 | NPT1/8" | 0.63 |
| | 3" | 3.78 | 4.8 | 5.71 | 7.28 | 0.71 | 4.23 | 5.49 | 7 | 0.75 | 15.75 | 8/4 | 2.17 | 9.45 | NPT1/4" | 1.14 |
| | 5" | 5.75 | 4.8 | 5.71 | 7.28 | 0.71 | 4.23 | 5.49 | 7 | 0.75 | 15.75 | 8/4 | 3.15 | 10.43 | NPT1/4" | 1.14 |
| 3" | 3" | 3.78 | 5.43 | 6.3 | 7.87 | 0.71 | 5 | 6 | 7.52 | 0.75 | 17.72 | 8/4 | 2.17 | 10.67 | NPT1/4" | 1.14 |
| | 5" | 5.75 | 5.43 | 6.3 | 7.87 | 0.71 | 5 | 6 | 7.52 | 0.75 | 17.72 | 8/4 | 3.15 | 11.65 | NPT1/4" | 1.14 |

Angle Seat Valve 7031

Version HT220

Dimensions and weight



| DN | Piston Ø | PN40 | | | | ANIS150 | | | | number of borings | F | L |
|--------|----------|------|------|------|------|---------|------|------|------|-------------------|------|-------|
| | | M | N | P | K | M | N | P | K | | | |
| 1/2" | 2" | 1.77 | 2.56 | 3.74 | 0.55 | 1.37 | 2.37 | 3.54 | 0.63 | 4 | 5.47 | 9.06 |
| 3/4" | 2" | 2.28 | 2.95 | 4.13 | 0.55 | 1.69 | 2.75 | 3.94 | 0.63 | 4 | 5.67 | 10.24 |
| | 3" | 2.28 | 2.95 | 4.13 | 0.55 | 1.69 | 2.75 | 3.94 | 0.63 | 4 | 7.13 | 10.24 |
| 1" | 3" | 2.68 | 3.35 | 4.53 | 0.55 | 2 | 3.13 | 4.33 | 0.63 | 4 | 7.28 | 10.24 |
| | 5" | 2.68 | 3.35 | 4.53 | 0.55 | 2 | 3.13 | 4.33 | 0.63 | 4 | 8.46 | 10.24 |
| 1 1/4" | 3" | 3.07 | 3.94 | 5.51 | 0.71 | 2.5 | 3.5 | 4.53 | 0.63 | 4 | 7.91 | 11.81 |
| | 5" | 3.07 | 3.94 | 5.51 | 0.71 | 2.5 | 3.5 | 4.53 | 0.63 | 4 | 9.09 | 11.81 |
| 1 1/2" | 3" | 3.46 | 4.33 | 5.91 | 0.71 | 2.88 | 3.87 | 4.92 | 0.63 | 4 | 8.11 | 11.81 |
| | 5" | 3.46 | 4.33 | 5.91 | 0.71 | 2.88 | 3.87 | 4.92 | 0.63 | 4 | 9.25 | 11.81 |
| 2" | 3" | 4.02 | 4.92 | 6.5 | 0.71 | 36.26 | 4.75 | 5.91 | 0.75 | 4 | 8.39 | 13.78 |
| | 5" | 4.02 | 4.92 | 6.5 | 0.71 | 36.26 | 4.75 | 5.91 | 0.75 | 4 | 9.53 | 13.78 |

Angle Seat Valve 7031

Temperature versions



| Version | Description | Fluid temperature | Ambient temperature |
|---------|---|---------------------|---------------------|
| 2 | Standard - Stainless steel | -22°F up to +338°F | +5°F up to +140°F |
| 3 | HT220 - version, only with PEEK seating seal | +320°F up to +428°F | +5°F up to +212°F |
| 4 | High temperature version in stainless steel | -22°F up to +392°F | +5°F up to +50°F |
| 7 | Low temperature version acc. to drawing R0194 for stainless steel body | -58°F up to +275°F | +5°F up to +140°F |
| 8 | Low temperature version acc. to drawing R0188 for stainless steel body | | -40°F up to +140°F |
| 10 | Low temperature version for stainless steel body | -40°F up to +338°F | +5°F up to +140°F |
| 12 | Bonnet for actuator made of polymer for stainless steel body | -22°F up to +275°F | +5°F up to +140°F |
| 14 | Low temperature version with bonnet for actuator made of polymer and stainless steel body | -40°F up to +275°F | +5°F up to +140°F |
| 16 | Long head section (without bellows) | -94°F up to +392°F | +5°F up to +140°F |
| 17 | Long head section with bellows | -148°F up to +392°F | +5°F up to +140°F |
| 19 | Standard, stainless steel with seals from NBR | -22°F up to +338°F | -22°F up to +140°F |
| 21 | Low temperature version, seating seal made of NBR and stainless steel body | -40°F up to +338°F | -22°F up to +140°F |
| 22 | Diaphragm actuator D250 | -22°F up to +392°F | -22°F up to +140°F |
| 23 | Low temperature version for diaphragm actuator D250 | -40°F up to +392°F | -22°F up to +140°F |